



Your Host

Cynthia Mitchell



Special Guest

Derek Bartolacelli

AFFIRM LIFE
DAILY
PODCAST

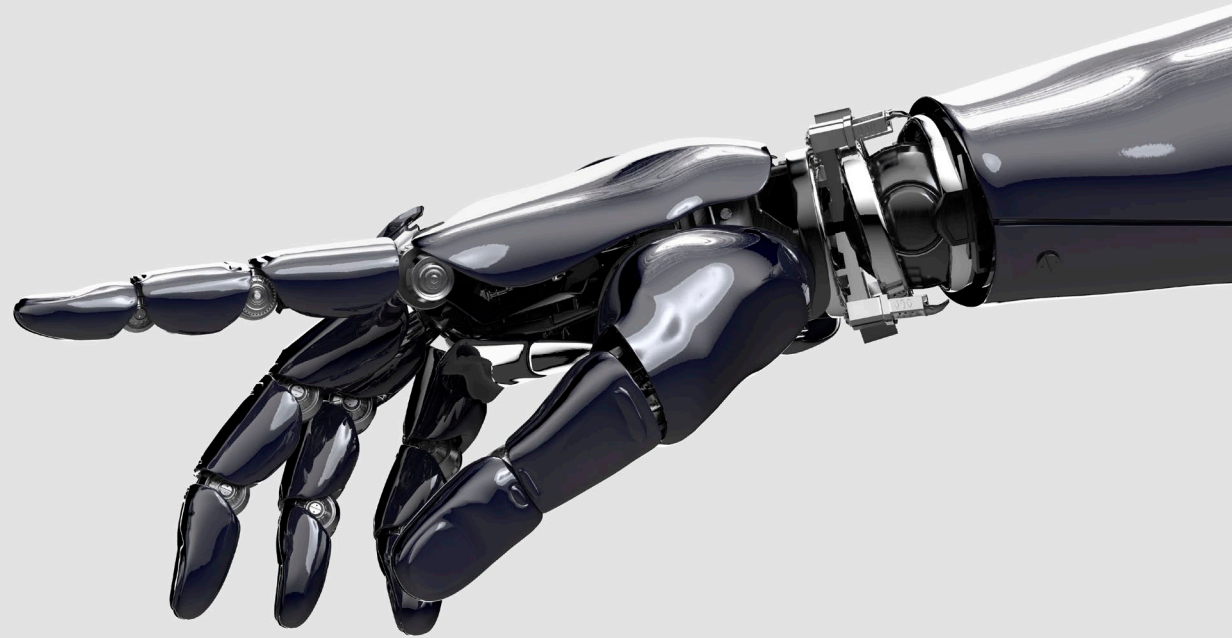
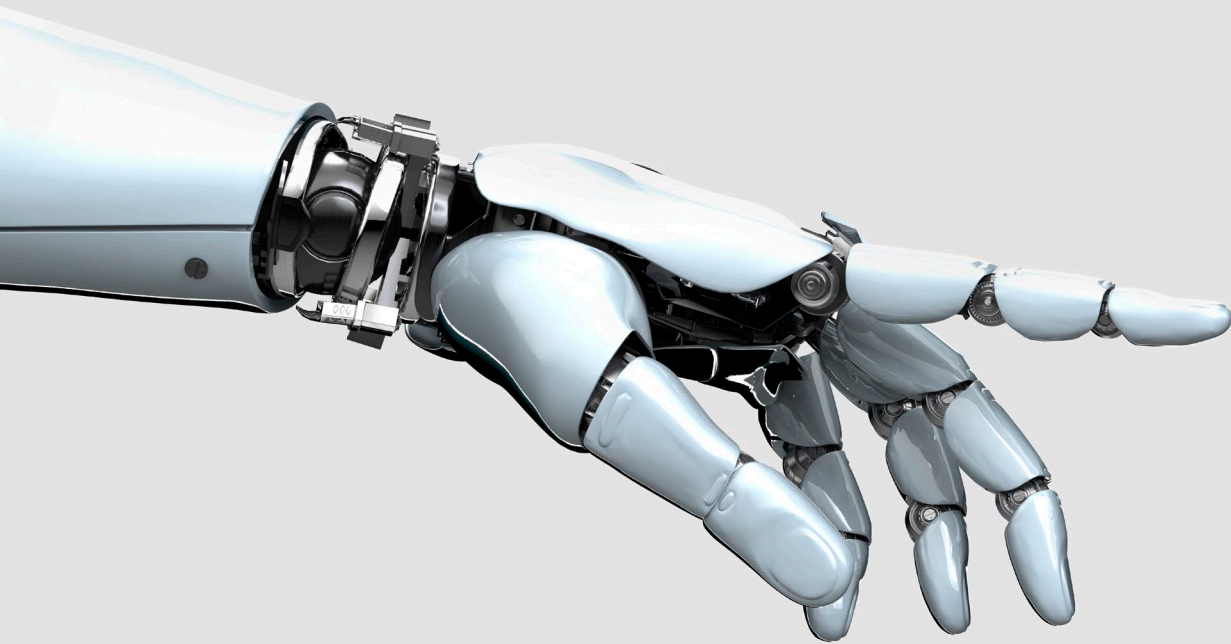
AFFIRM LIFE DAILY NATURAL LAW PODCAST

The Dark Side of AI and Big Tech

Discussing the dark side AI and Big Tech. We will explore the environmental and moral implications, as well as how it is rapidly changing our lives.

AffirmLifeDaily.com

What is AI?






How is AI and Big Tech
changing our lives?

What are the environmental impacts of AI?

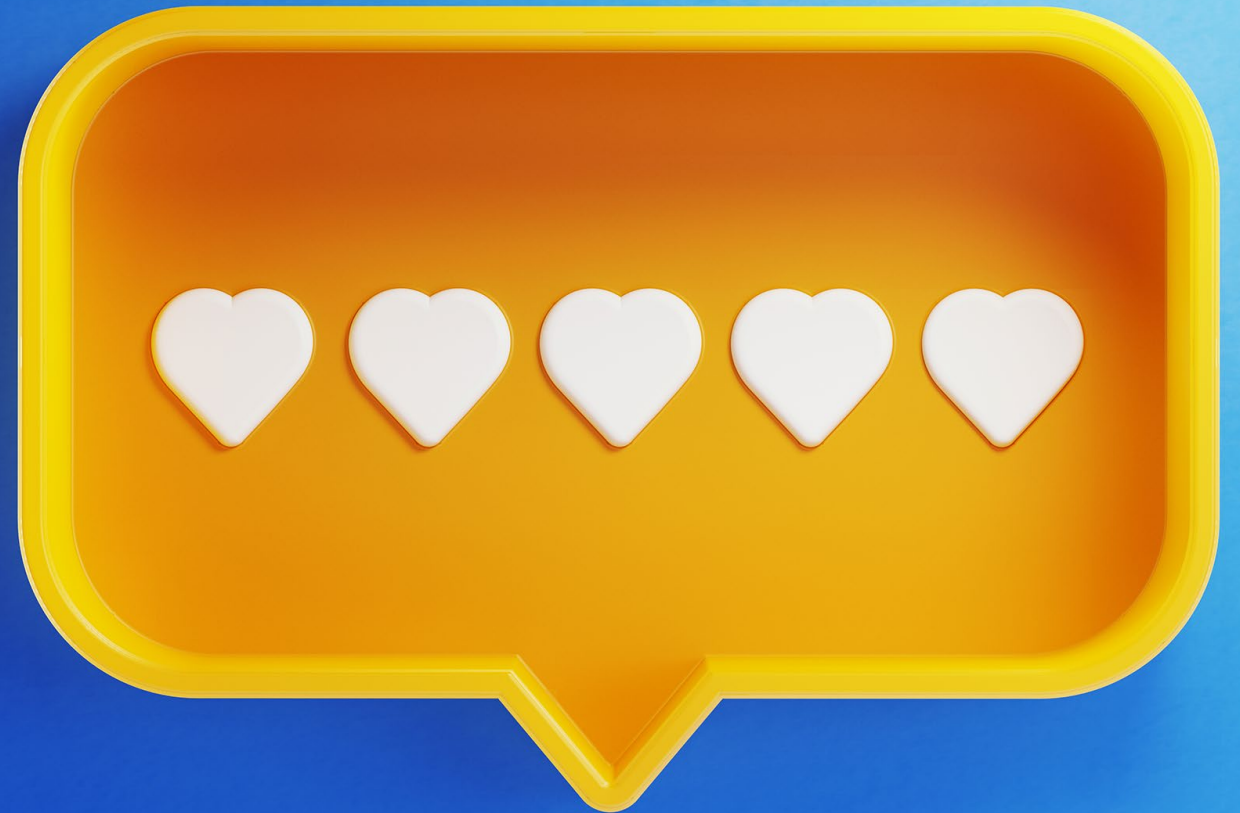


The background of the image is a complex digital visualization. It features a central perspective of a tunnel formed by numerous concentric, glowing circles in shades of purple, pink, and white. These circles create a strong sense of depth, drawing the viewer's eye towards a bright, white light at the far end of the tunnel. The walls of this digital tunnel are composed of intricate, layered patterns of blue and white lines, resembling circuit boards, data maps, or complex network diagrams. Scattered throughout these patterns are small, glowing points of light and various digital symbols, such as arrows and alphanumeric characters, which enhance the high-tech, cybernetic feel of the image. The overall color palette is dominated by deep blues and purples, with the bright white and pinkish-purple of the tunnel's center providing a stark contrast.

**What are the potential
dangers and moral
implications of AI?**

QUESTIONS,
COMMENTS,
FEEDBACK???

Let's Talk...





JOIN US FOR OUR
NEXT PODCASTS

**Let What We Consume
Be Our Medicine**
with Special Guest Sara Cross
of Timestrider Radio
Wed. Oct 29th @ 7pm EST

**Visit Our Website for More Information,
Resources and Ways To Connect**

Follow Us On Social Media @affirmlifedaily



AFFIRM LIFE
DAILY
PODCAST

affirmlifedaily.com